

# COLLEGE STREET REVITALIZATION INITIATIVE PRESENTATION TO PEDESTRIAN COMMITTEE



Harbord Village Residents' Association, with Brown+Storey Architects

# COLLEGE STREET REVITALIZATION INITIATIVE PRESENTATION TO PEDESTRIAN COMMITTEE

## Goals today:

- ✓ share HVRA experience with improving pedestrian realm
- ✓ outline some of the key 'lessons learned' for discussion, and potential support
- ✓ celebrate a bit of urban, pedestrian success

# COLLEGE STREET REVITALIZATION INITIATIVE BEFORE & AFTER ..... MAJOR STREET



# COLLEGE STREET REVITALIZATION INITIATIVE BEFORE & AFTER ..... MARS RESTAURANT



# COLLEGE STREET REVITALIZATION INITIATIVE BEFORE & AFTER ..... LIPPINCOTT STREET



# COLLEGE STREET REVITALIZATION INITIATIVE BEFORE & AFTER ..... FREE TIMES CAFE



# COLLEGE STREET REVITALIZATION INITIATIVE

## GOALS

- ✓ a bold stroke to spur revitalization
- ✓ a beautiful, distinctive streetscape -- celebrating the past while supporting future development
- ✓ pedestrian focus -- as a safe, efficient commuting route and an enjoyable, beautiful destination
- ✓ Create an urban design prototype, with potential for wider application in the City

# COLLEGE STREET REVITALIZATION INITIATIVE

## TIMELINE

- ✓ Fall 2000 Initial Community Meeting -- New Vision!
- ✓ May 2001 HVRA Spring Meeting -- defer construction
- Nov 2001 Community Council Support /UD Award for BSA
- ✓ Jun 2002 Council Support -- align with TTC schedule
- Fall 2002 Site meetings -- funding concerns -- '05/06?
- ✓ Apr 2003 Business Open House/Candidates Support
- Aug 2003 Notice of 2004 Construction Schedule
- Fall 2003 Agreement on compromise curb alignment
- ✓ Feb 2004 Council Support for funding and plan
- Oct 2004 Sidewalk 'Program' submitted (HVRA)
- ✓ Jan 2005 Business Meetings re Clearway concept
- Feb 2005 Community Council support for 'clearway' pilot
- Mar 2005 Community Council support for VB Pilot

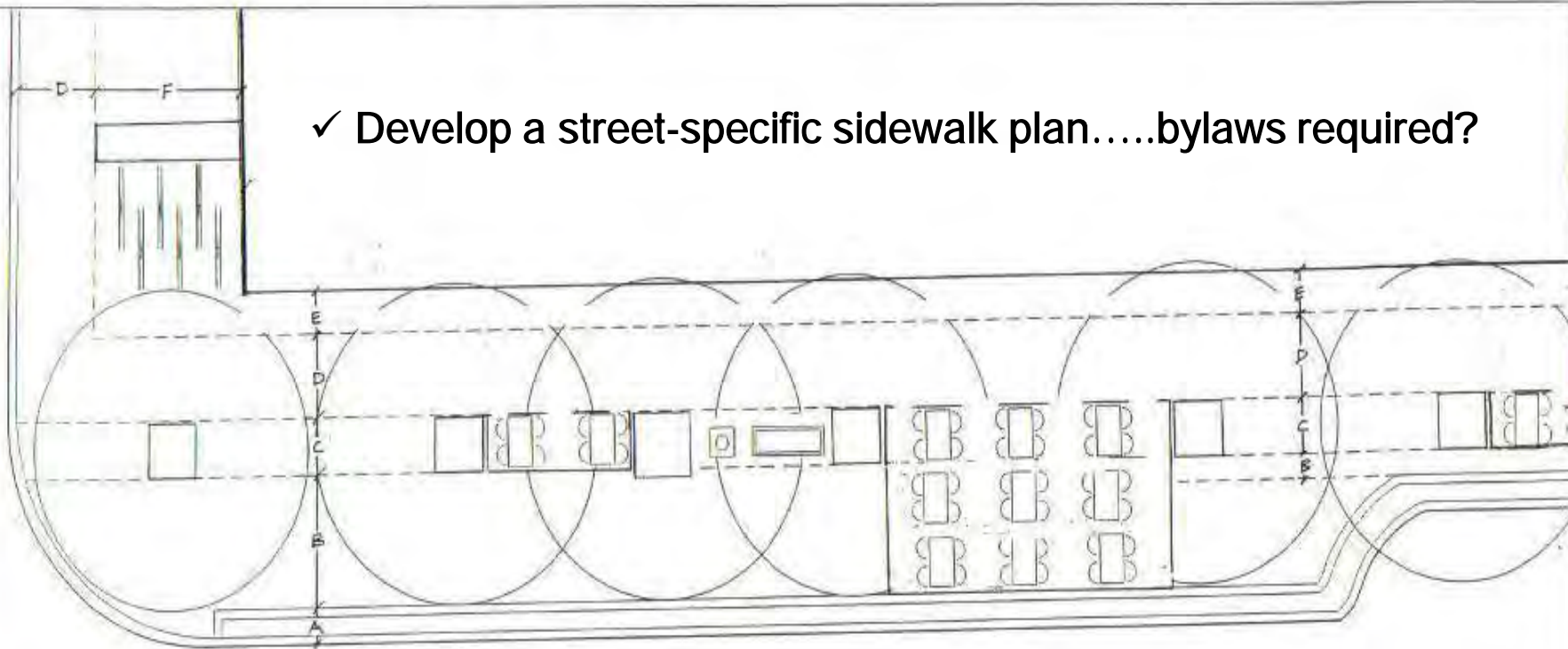
# COLLEGE STREET REVITALIZATION INITIATIVE

## CHALLENGES

- coordination/followup: extreme effort, many players
- infrastructure: patio bylaws work against a 'clearway'; lack of standards for 'item' placement
- funding: essentially all budget with Works & Emerg Svcs => focus on 'state of good repair'/traffic flow vs betterment
- no 'pedestrian voice': to balance cycling, operations or other 'vetoes' -- 'what's left vs what's best'.
- involvement model: no 'model' or infrastructure to accommodate citizen led effort or spur innovation

**'COLLEGE WEST' REVITALIZATION:  
SIDEWALK PROGRAMMING ZONE PROPOSALS**

✓ Develop a street-specific sidewalk plan.....bylaws required?



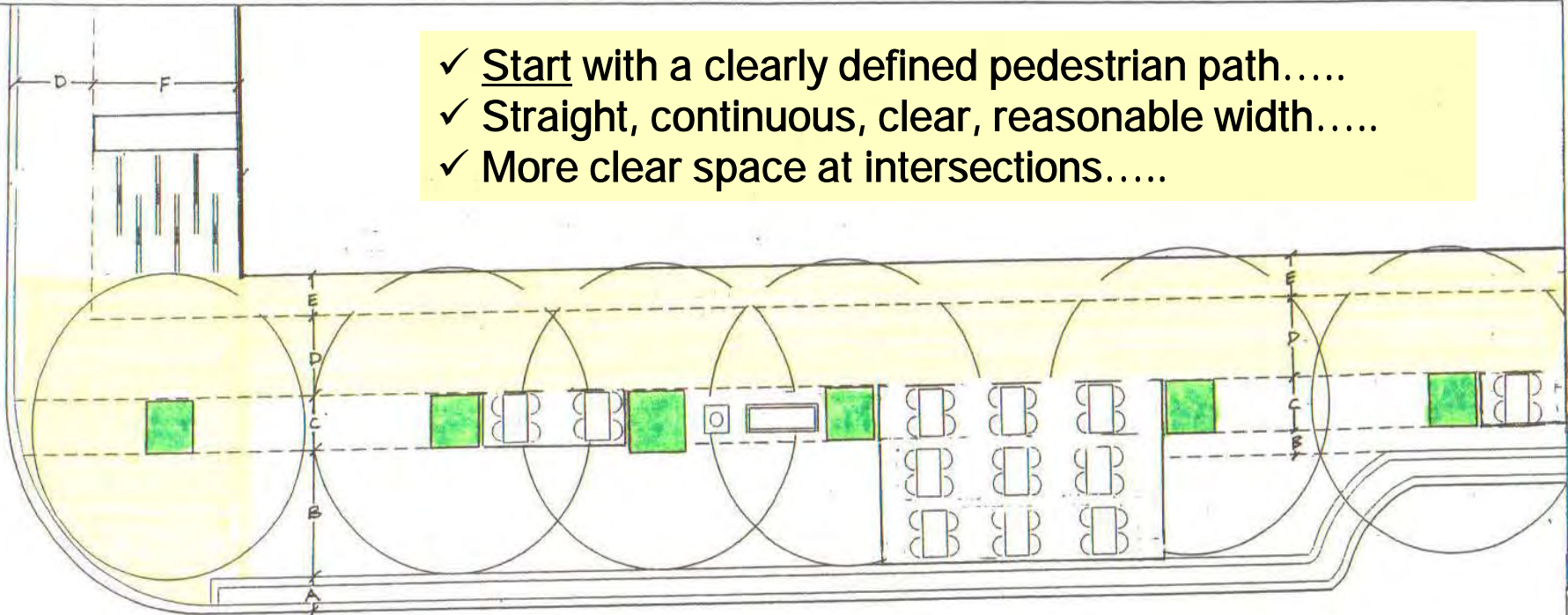
<u>Zone Description</u>	<u>Width</u>	<u>Proposed Uses</u>
A Brick Band	0.8 m	Car Access...Pay & Display...Traffic Signs...Retail Garbage Drop
B Open Sidewalk	2.0 m +	Public Art...Notice Kiosks...Public space...Extended Patios
C Tree Zone	1.2 m	Patios...Marketing...Benches/Planters...Recycling Bins...Bike Rings
D Pedestrian Clearway	2.13 m (7ft)	Walking
E Building Frontage	None to 1.2 m	Walking...(potentially 18" Marketing?)
F Street Allowance	4-5 m	Interim -- as is, plus more bike parking Long Term -- Patios...Community Gardens...Green space/seating

Zone E: Building Frontage Widths - North Side

Bathurst - Lippincott	1.0m - 1.2m
Lippincott - Brunswick	0.7m-0.9m
Brunswick - Major	0.9m (brick)
Major - Robert	0.1m-0.25m
Robert - Spadina	0.8m

**'COLLEGE WEST' REVITALIZATION:  
SIDEWALK PROGRAMMING ZONE PROPOSALS**

- ✓ **Start with a clearly defined pedestrian path.....**
- ✓ **Straight, continuous, clear, reasonable width.....**
- ✓ **More clear space at intersections.....**



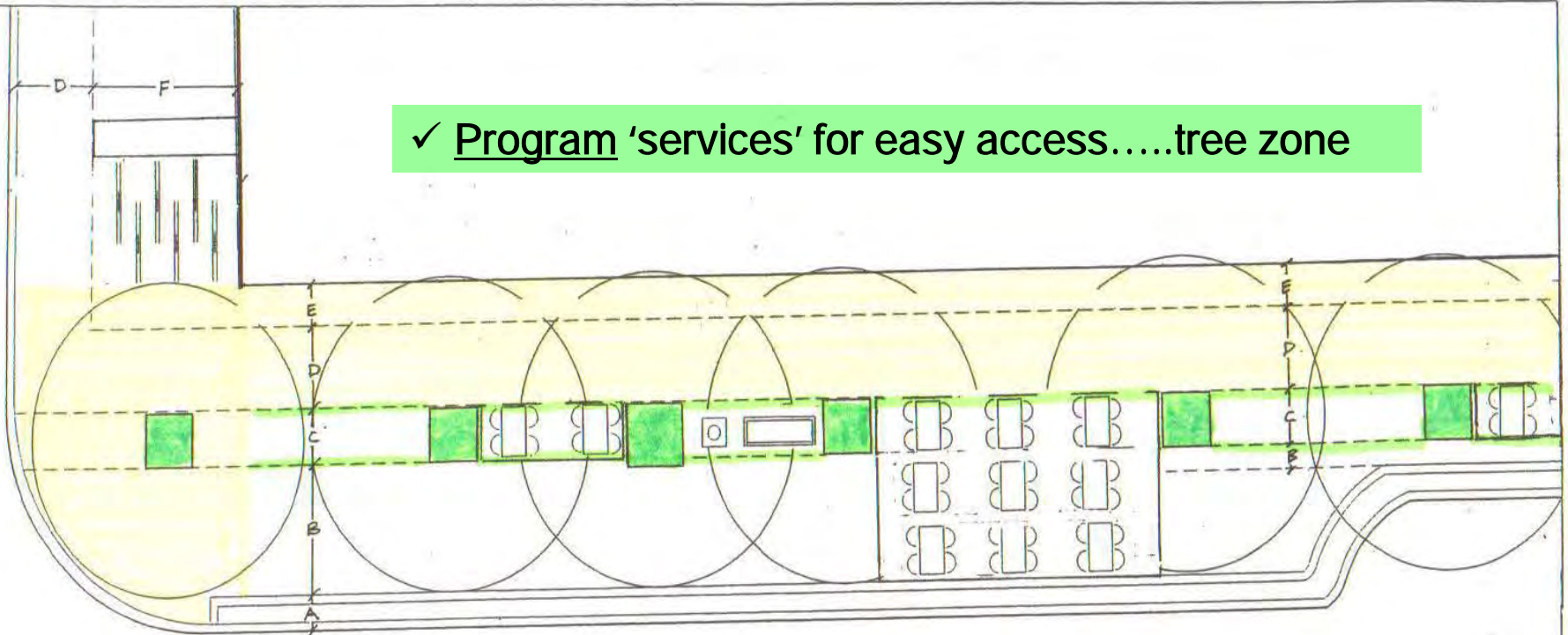
<u>Zone Description</u>	<u>Width</u>	<u>Proposed Uses</u>
A Brick Band	0.8 m	Car Access...Pay & Display...Traffic Signs...Retail Garbage Drop
B Open Sidewalk	2.0 m +	Public Art...Notice Kiosks...Public space...Extended Patios
C Tree Zone	1.2 m	Patios...Marketing...Benches/Planters...Recycling Bins...Bike Rings
✓ D Pedestrian Clearway	2.13 m (7ft)	Walking
E Building Frontage	None to 1.2 m	Walking...(potentially 18" Marketing?)
F Street Allowance	4-5 m	Interim -- as is, plus more bike parking Long Term -- Patios...Community Gardens...Green space/seating

Zone E: Building Frontage Widths - North Side

Bathurst - Lippincott	1.0m - 1.2m
Lippincott - Brunswick	0.7m-0.9m
Brunswick - Major	0.9m (brick)
Major - Robert	0.1m-0.25m
Robert - Spadina	0.8m

**'COLLEGE WEST' REVITALIZATION:  
SIDEWALK PROGRAMMING ZONE PROPOSALS**

✓ Program 'services' for easy access.....tree zone



<u>Zone Description</u>	<u>Width</u>	<u>Proposed Uses</u>
A Brick Band	0.8 m	Car Access...Pay & Display...Traffic Signs...Retail Garbage Drop
B Open Sidewalk	2.0 m +	Public Art...Notice Kiosks...Public space...Extended Patios
C <b>Tree Zone</b>	1.2 m	<b>Patios...Marketing...Benches/Planters...Recycling Bins...Bike Rings</b>
D <b>Pedestrian Clearway</b>	2.13 m (7ft)	<b>Walking</b>
E <b>Building Frontage</b>	None to 1.2 m	<b>Walking...(potentially 18" Marketing?)</b>
F Street Allowance	4-5 m	Interim -- as is, plus more bike parking Long Term -- Patios...Community Gardens...Green space/seating

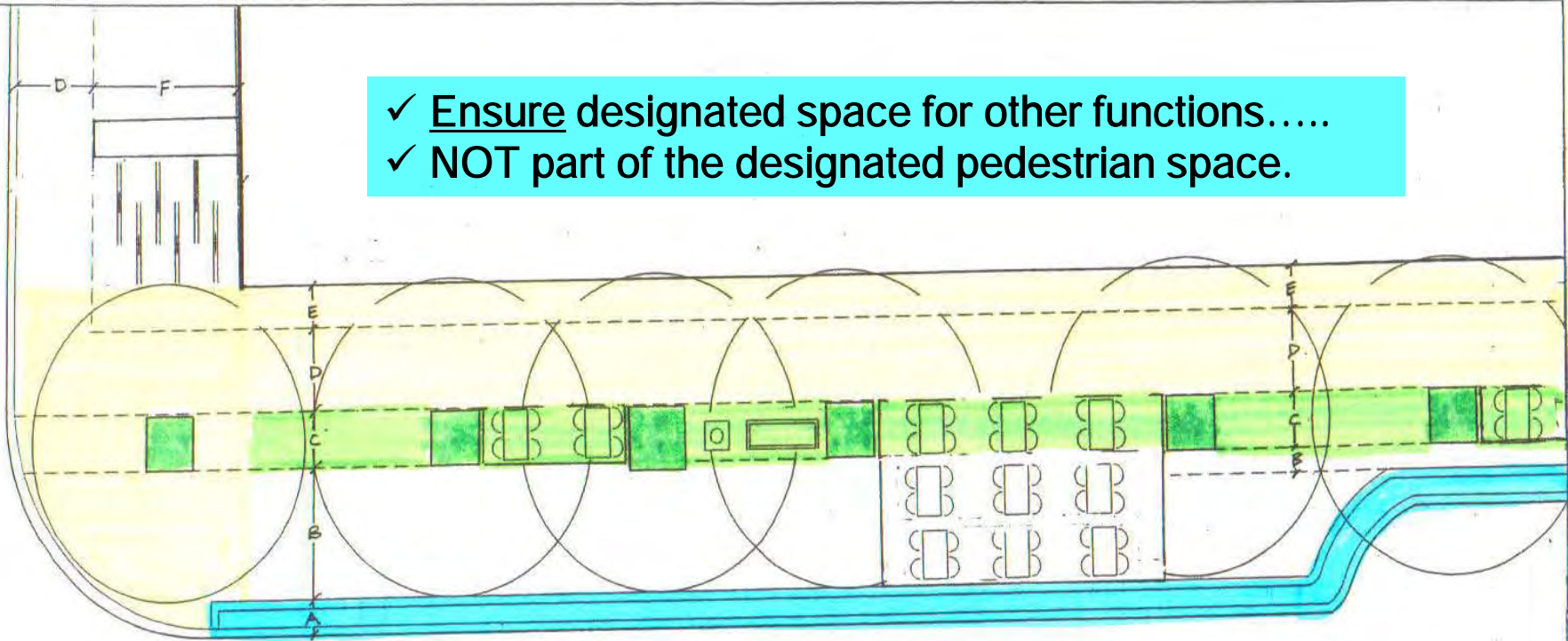
Zone E: Building Frontage Widths - North Side

Bathurst - Lippincott	1.0m - 1.2m
Lippincott - Brunswick	0.7m-0.9m
Brunswick - Major	0.9m (brick)
Major - Robert	0.1m-0.25m
Robert - Spadina	0.8m

✓

**'COLLEGE WEST' REVITALIZATION:  
SIDEWALK PROGRAMMING ZONE PROPOSALS**

✓ **Ensure** designated space for other functions.....  
 ✓ **NOT** part of the designated pedestrian space.



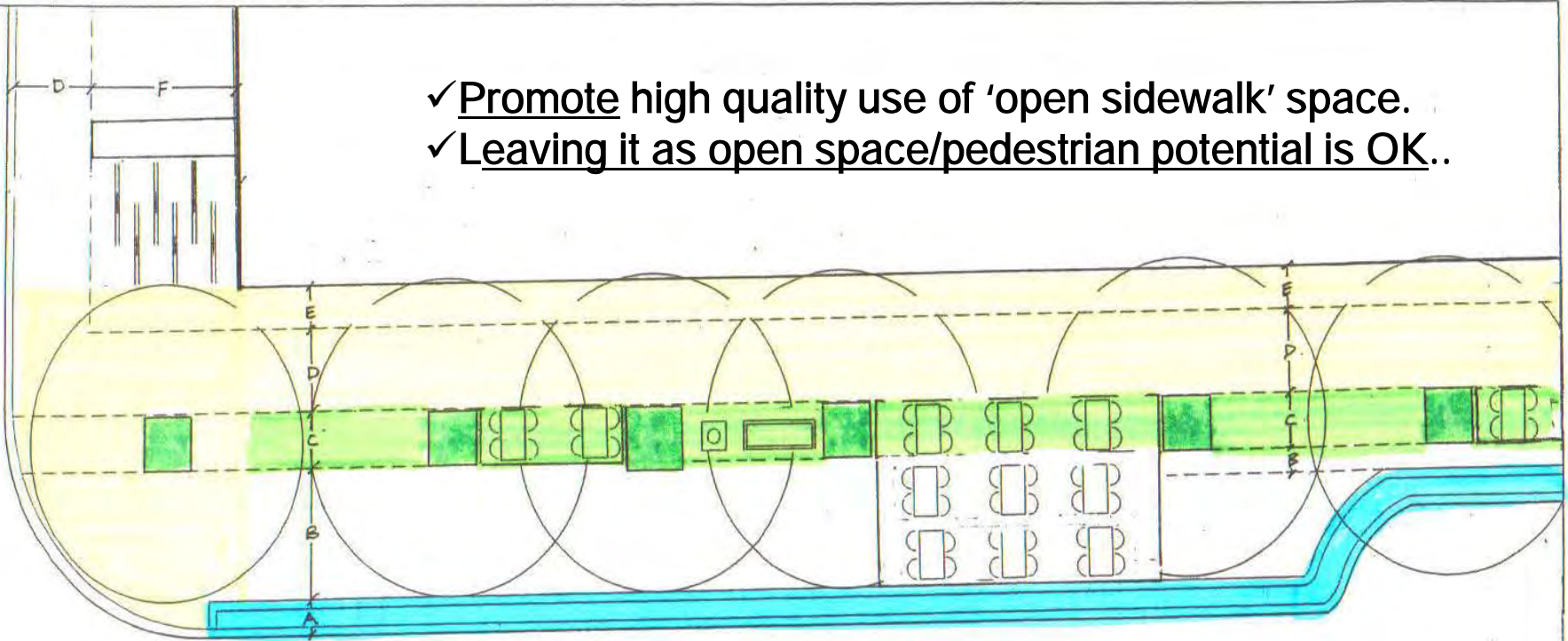
Zone Description	Width	Proposed Uses
✓ A Brick Band	0.8 m	Car Access...Pay & Display...Traffic Signs...Retail Garbage Drop
B Open Sidewalk	2.0 m +	Public Art...Notice Kiosks...Public space...Extended Patios
C Tree Zone	1.2 m	Patios...Marketing...Benches/Planters...Recycling Bins...Bike Rings
D Pedestrian Clearway	2.13 m (7ft)	Walking
E Building Frontage	None to 1.2 m	Walking...(potentially 18" Marketing?)
F Street Allowance	4-5 m	Interim -- as is, plus more bike parking Long Term -- Patios...Community Gardens...Green space/seating

**Zone E: Building Frontage Widths - North Side**

Bathurst - Lippincott	1.0m - 1.2m
Lippincott - Brunswick	0.7m-0.9m
Brunswick - Major	0.9m (brick)
Major - Robert	0.1m-0.25m
Robert - Spadina	0.8m

**'COLLEGE WEST' REVITALIZATION:  
SIDEWALK PROGRAMMING ZONE PROPOSALS**

- ✓ Promote high quality use of 'open sidewalk' space.
- ✓ Leaving it as open space/pedestrian potential is OK..



<u>Zone Description</u>	<u>Width</u>	<u>Proposed Uses</u>
A Brick Band	0.8 m	Car Access...Pay & Display...Traffic Signs...Retail Garbage Drop
B Open Sidewalk	2.0 m +	Public Art...Notice Kiosks...Public space...Extended Patios
C Tree Zone	1.2 m	Patios...Marketing...Benches/Planters...Recycling Bins...Bike Rings
D Pedestrian Clearway	2.13 m (7ft)	Walking
E Building Frontage	None to 1.2 m	Walking...(potentially 18" Marketing?)
F Street Allowance	4-5 m	Interim -- as is, plus more bike parking Long Term -- Patios...Community Gardens...Green space/seating

Zone E: Building Frontage Widths - North Side

Bathurst - Lippincott	1.0m - 1.2m
Lippincott - Brunswick	0.7m-0.9m
Brunswick - Major	0.9m (brick)
Major - Robert	0.1m-0.25m
Robert - Spadina	0.8m

# COLLEGE STREET REVITALIZATION INITIATIVE

## CURRENT STATE

- ✓ new sidewalk in place ... used and enjoyed
- ✓ 90 new trees –.. most need replacement
- ✓ sidewalk items programmed ..... EUCAN and paper vending boxes outstanding
- ✓ Avenues Study approved by council
- ✓ patios pilot approved for 2006
  
- X patio chaos ..... non-compliance to bylaw
- X vending box chaos ..... pilot project approved
- X sidewalk cycling is rampant

# COLLEGE STREET REVITALIZATION INITIATIVE END RESULTS



# COLLEGE STREET REVITALIZATION INITIATIVE

## END RESULTS



# COLLEGE STREET REVITALIZATION INITIATIVE END RESULTS



# COLLEGE STREET REVITALIZATION INITIATIVE END RESULTS



# COLLEGE STREET REVITALIZATION INITIATIVE END RESULTS



# COLLEGE STREET REVITALIZATION INITIATIVE END RESULTS...HOW CAN WE REPEAT THIS?



# COLLEGE STREET LESSONS LEARNED

To encourage a repeat of this – and to maintain what has been gained – requires the usual things:

- ✓ Vision: Pedestrian Charter, Clean & Beautiful City?
- ✓ Process: Pedestrianism a focus, not afterthought
- ✓ Standards: Minimums, guidelines, 'best practices'
- ✓ Pattern & People: Picture it, plan it, put it in place.

# COLLEGE STREET LESSONS LEARNED

VISION.....PROCESS.....STANDARDS...PATTERN & PEOPLE



Ensure pedestrian priority  
in sidewalk  
planning & operations

## Plan for Reconstruction

- long term vision
- opportunities for rebalancing
- identify pedestrian clearway
- program around it

## Fix what we have

- many opportunities
- identify pedestrian clearway
- reprogram around it
- site specific bylaws?
- best use of available space

# COLLEGE STREET LESSONS LEARNED

VISION.....PROCESS.....STANDARDS...PATTERN & PEOPLE

What? Where?  
How Much??

Clearway  
TTC Shelters  
EUCAN Bins  
Phone Booths  
Bike Rings  
Patios/Mktg  
A-Frames  
Signage  
Pay & Display  
Crossing 'Buttons'



# COLLEGE STREET LESSONS LEARNED STANDARDS

## CLEARWAY -- OVATIONS



College St



Yonge Street

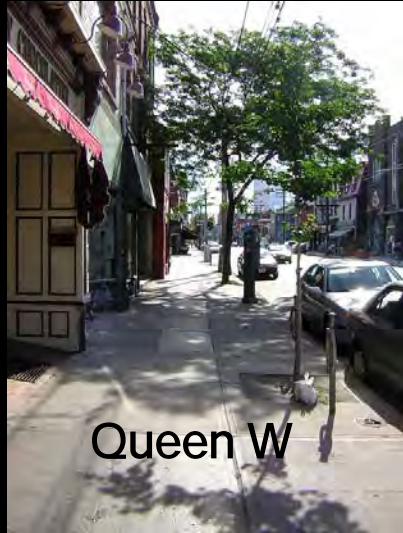


King W



College St

# COLLEGE STREET LESSONS LEARNED STANDARDS CLEARWAY -- OVATIONS



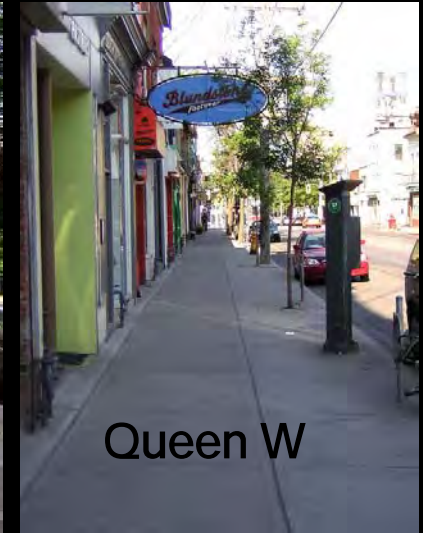
Queen W



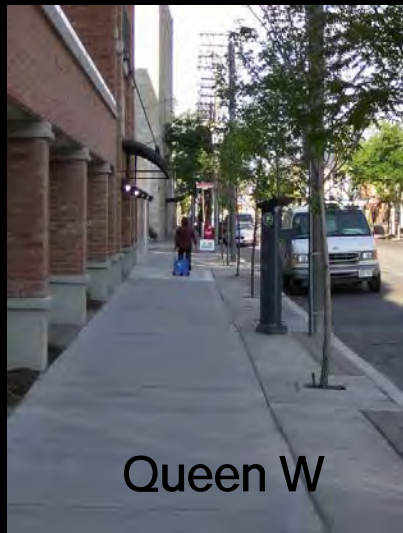
Bloor W



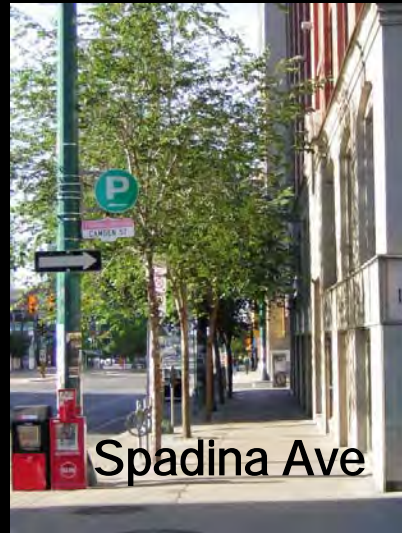
King W



Queen W



Queen W



Spadina Ave

- ✓ Many examples of good space - only some of them shown here.
- ✓ Sidewalks as narrow as 3 metres can be attractive, safe and well shaded -- if planned.
- ✓ The well-ordered 'tree zone' and absence of 'sporadic' patios helps make these spaces work?

# COLLEGE STREET LESSONS LEARNED STANDARDS CLEARWAY -- OPPORTUNITIES



Make more sidewalk space where possible—

Use it better where limited.



# COLLEGE STREET LESSONS LEARNED STANDARDS

## TTC SHELTERS -- OVATIONS

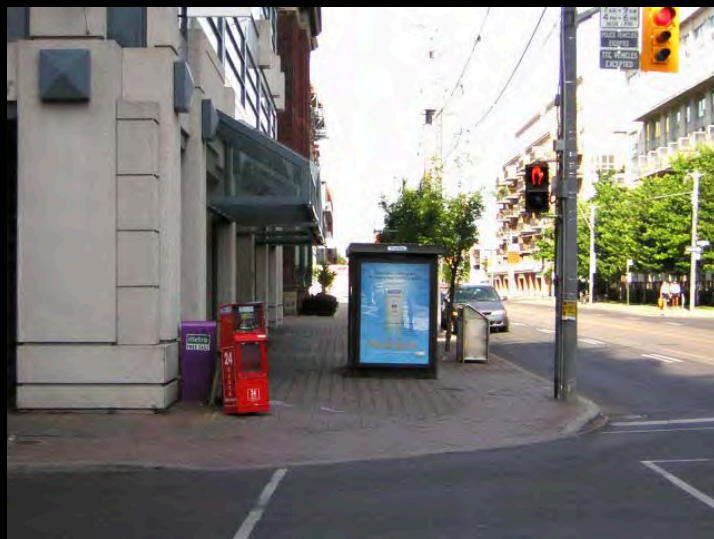


Time to  
revisit old  
ideas .....  
for new  
shelter  
designs?



# COLLEGE STREET LESSONS LEARNED STANDARDS

## TTC SHELTERS -- OPPORTUNITIES



Use overhangs  
and other  
natural shelter  
on narrow  
sidewalks?

Revisit shelter  
design?



# COLLEGE STREET LESSONS LEARNED STANDARDS PHONE BOOTHS -- OVATIONS



- ✓ Easily accessible
- ✓ Out of pedestrian path.
- ✓ Aligned with other vertical elements (where possible) to reduce clutter.

# COLLEGE STREET LESSONS LEARNED STANDARDS

## PHONE BOOTHS -- OPPORTUNITIES



✓ Locate out of pedestrian way ..... On flankage or in tree zone.

✓ Remove unauthorized phone boxes?

# COLLEGE STREET LESSONS LEARNED STANDARDS

## BIKE PARKING -- OVATIONS



Accessible  
to cyclists.

Not in  
pedestrian  
space.

Visually  
clean –  
clustered?



# COLLEGE STREET LESSONS LEARNED STANDARDS

## BIKE PARKING -- OPPORTUNITIES



Narrow sidewalks require other bike ring solutions.

Pedestrians path should be first priority on narrow sidewalks.



Bike bay in hospital lot??



Focus rings in one zone?

# COLLEGE STREET LESSONS LEARNED STANDARDS

## BIKE PARKING -- OPPORTUNITIES



A clearly defined pathway combined with placement standards will help ensure consistency, as in new Bay Street walkway at left.

U of T keeps its main entrance clean and pedestrian focused– while providing excellent bike parking on adjacent sides (left centre below).



# COLLEGE STREET LESSONS LEARNED STANDARDS

## PATIOS/MARKETING -- OVATIONS



Curbside patios in Florida and St. Jérôme, Quebec -- somewhat similar to College Street Pilot.

Queen Street patio provides generous clearance around sign.

# COLLEGE STREET LESSONS LEARNED STANDARDS

## PATIOS/MARKETING -- OPPORTUNITIES



Current bylaws don't support a straight, continuous pedestrian clearway.

Application is inconsistent, and includes tree pit pavers in the 7' walkable space.

College Street Pilot allows testing of the curbside patio model -- potential wider application, and safety/beautify gains.

# COLLEGE STREET LESSONS LEARNED STANDARDS

## SIGNAGE -- OVATIONS/OPPORTUNITIES



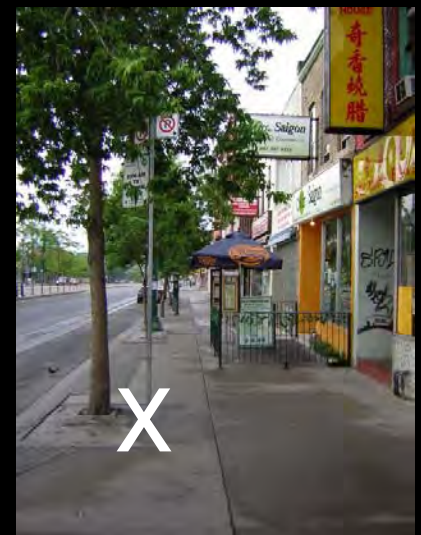
Minimize number of poles, combine signs to reduce visual and physical clutter. Good examples on College.

.....traffic signs, street signs, TTC stops, bike lanes, parking signs, pedestrian crossing buttons, etc.....



Locate poles in tree zone, brick zone—

Keep outside pedestrian path.



# COLLEGE STREET LESSONS LEARNED STANDARDS

## PAY & DISPLAY -- OVATIONS



Kiosks are readily accessible to drivers -- but unobstructive to Pedestrians.

Alignment with other vertical elements reduces clutter.

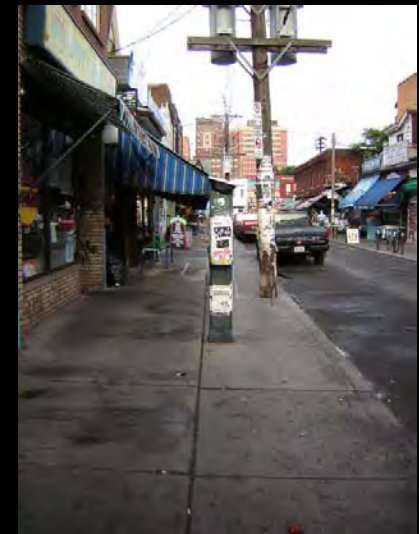
# COLLEGE STREET LESSONS LEARNED STANDARDS

## PAY & DISPLAY -- OPPORTUNITIES



An easy fix.

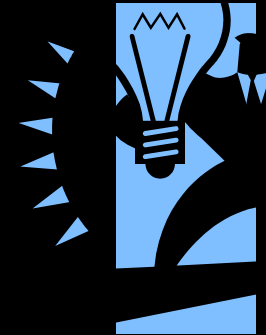
Locate at curb  
next to  
verticals, or in  
tree zone.



# COLLEGE STREET LESSONS LEARNED

VISION.....PROCESS.....STANDARDS...PATTERN & PEOPLE

- ✓ Who is in place to do what we/councilor's office did?
- ✓ 'Sidewalk Czar'? Manager of Public Spaces?
- ✓ Propose.....Promote.....Plan.....Project  
Manage.....Proceduralize
  - o ..... as much as possible
  - o .....as safe/functional as possible
  - o .....as beautiful as possible
- ✓ Coordinate, communicate, celebrate



# COLLEGE STREET LESSONS LEARNED

## BOTTOM LINE

- An emerging 'success story' for the city.
- It won't be repeated without infrastructure changes: vision, process, standards, and a pedestrian 'leader'.
- Major opportunities to improve pedestrian realm through planning MORE space, and simply improving quality of what we have -- aligned with Clean & Beautiful City.
- Pedestrian Committee support can help make it happen.

# COLLEGE STREET REVITALIZATION INITIATIVE

## ENJOY THE STROLL!



Harbord Village Residents' Association, with Brown+Storey Architects